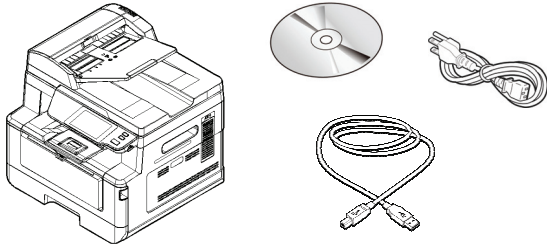
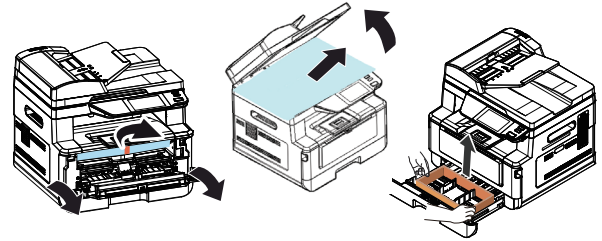




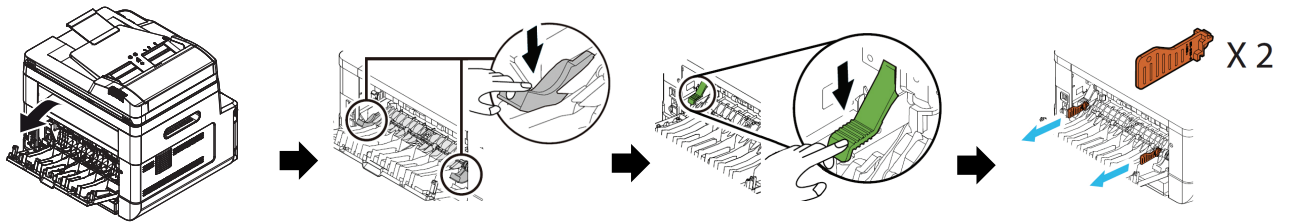
**1 包装内容**



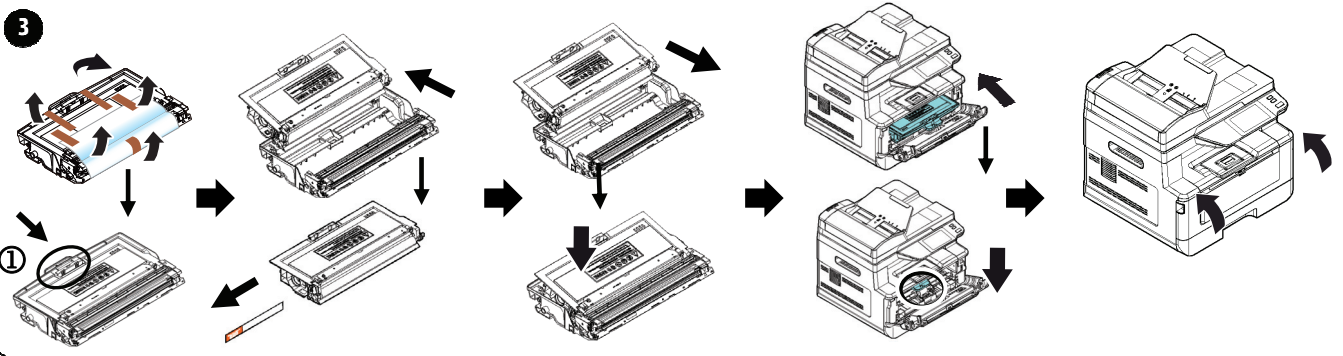
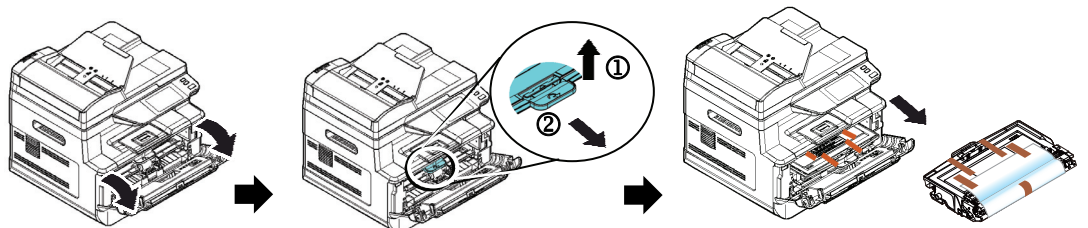
**2 移除包装材料**



**2 移除垫片**

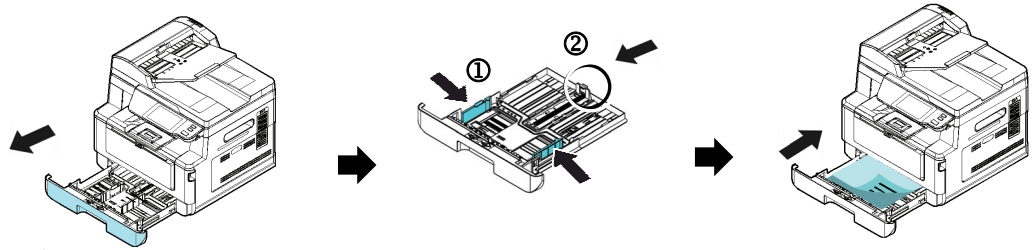


**3 移除墨粉盒与硒鼓的红胶、保护膜、与封条**

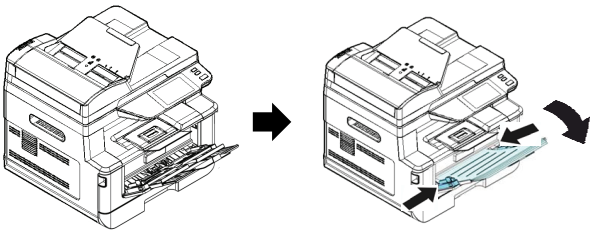


# A4 MFP

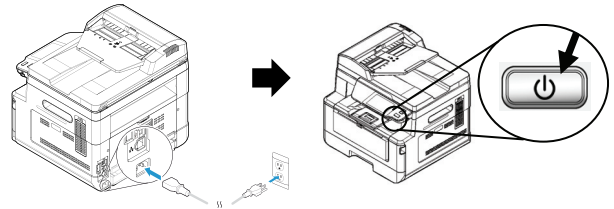
## 4 将纸张装入主要纸盒



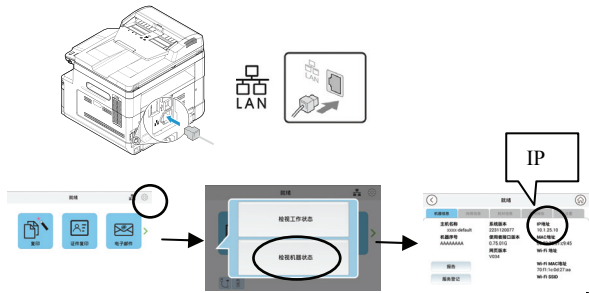
## 5 将纸张装入手动纸盒



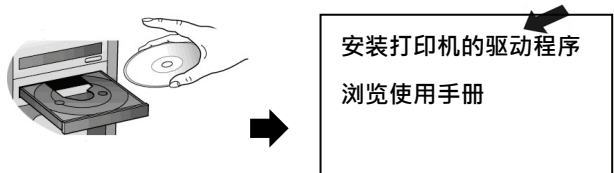
## 6 连接电源并开启电源



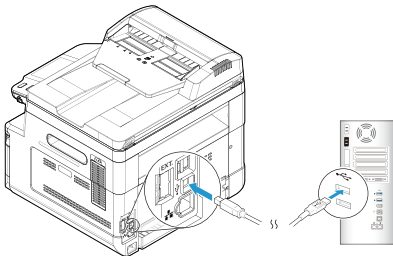
## 7 通过网络连接计算机



## 8 安装打印机的驱动程序



## 9 通过 USB 端口连接计算机



## ! 更多操作的细节，请参考光盘内的使用手册。

